



**For Visionary
School Leaders**

A Smart Way to Deliver Academics For Smarter Schools

Explore our academic delivery platform equipped with customised functionalities designed to enhance offline & online teaching, learning, monitoring, and comprehensive school administration.

**Jelajah
Ilmu**

www.jelajahilmu.com

Jelajah Ilmu

The Future of Education!

Jelajah Ilmu is an online academic delivery platform and the recipient of multiple **internationally recognised awards for its technology and pedagogy.**



Our platform enables smooth integration of online and offline academic delivery with the features specifically designed to elevate learning, teaching, performance monitoring, and comprehensive school administration.

Jelajah Ilmu unlocking possibilities for everyone!

**School
Leaders**

Teachers

Students

Parents



Jelajah Ilmu X Penerbit Intan Pariwara Advocating Merdeka Kurikulum

Merdeka Kurikulum is an educational framework developed by the Indonesian government to transform the country's curriculum and teaching methods. To implement Merdeka Kurikulum, the government encourages educational institutions to adopt innovative teaching methods, utilise technology, and provide a conducive learning environment.

Jelajah Ilmu, with its innovative features and collaboration with Penerbit Intan Pariwara, offers a comprehensive solution for implementing and delivering Merdeka Kurikulum across educational institutions in Indonesia.





Our Features

The features of our versatile platform has the ability to support both online and offline academic delivery. For you, the school leader, our platform allows you to see what is happening in your school in terms of usage, results, and even attendance!

Everything that you can do in Jelajah Ilmu as a School Leader!

School's Personalised Academic Delivery Platform

- ✓ School Branding- Prominently brand the interface
- ✓ Set logo and motto that appears in all accounts connected to the school

Data Driven Insights

Access class as well as individual student reports

- ✓ Attendance report
- ✓ Testpapers generated & attempted
- ✓ Assignment reports & grades
- ✓ eBooks reports
- ✓ Weekly, monthly & daily logins report

Access teacher's activity report

- ✓ Recent activities report
- ✓ In-Class and Online Sessions report
- ✓ Weekly/Monthly scheduled Session report
- ✓ Testpaper generated report
- ✓ Assignment created report
- ✓ eBook accessed
- ✓ Chat Room created & joined report
- ✓ Announcements report

HQ Dashboard

- ✓ Teacher & student information of multiple schools under your charge
- ✓ Summary information of all schools
- ✓ Individual school information
- ✓ Comparative information
- ✓ Highest/Lowest performing school data

Announcements

- ✓ Send General Announcements
- ✓ Send eConsent forms and receive responses

Note: Feature updates might be carried out periodically without prior notification, to provide a better user experience. Please contact us via the Chat Support, for assistance regarding the platform.



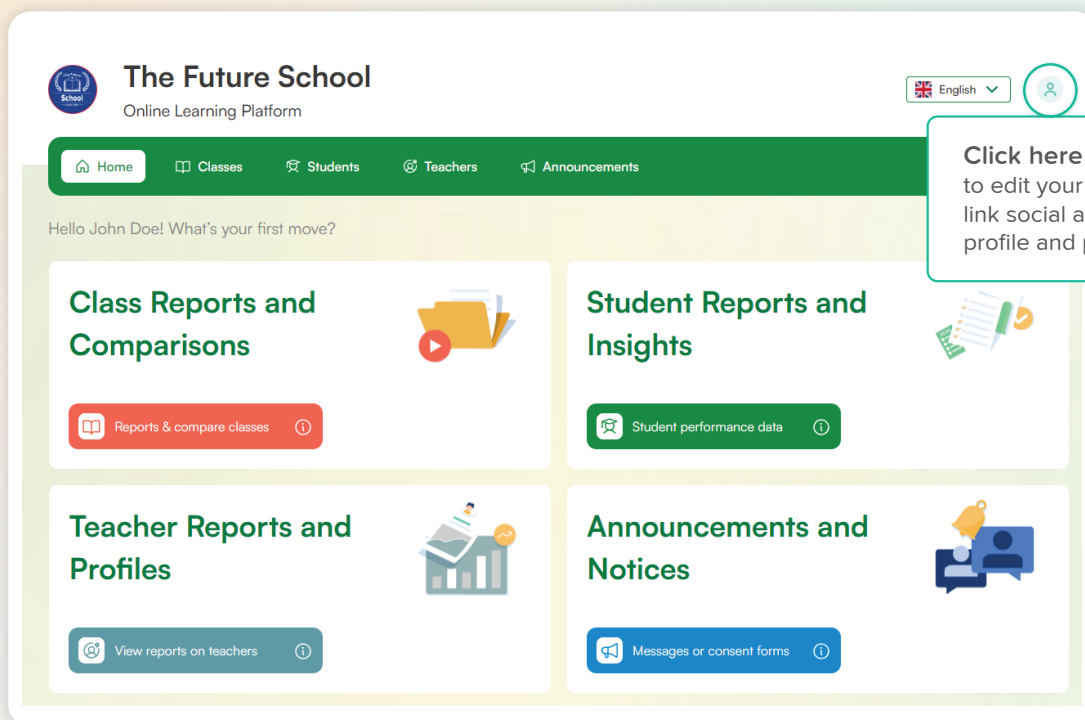
Jelajah Ilmu

For School Leaders



With the myriad of data provided by **Jelajah Ilmu**, your school has the opportunity to become a top-tier smart school in Indonesia. By utilising the valuable insights offered, you can make well-informed decisions that will lead your educational institution towards success.

A Leader's Dashboard



Explore Jelajah Ilmu to achieve:

- ✓ Informed decision making
- ✓ Improved performance & efficiency tracking
- ✓ Platform personalisation
- ✓ Convenient communication
- ✓ Risk mitigation
- ✓ Overall understanding of the school's progress



Your School's Personalised Academic Delivery Platform

Jelajah Ilmu allows you to prominently brand the interface with your school's logo and motto which can be edited as well. The same logo and motto will appear in the dashboard of every individual whose account is connected with your school's.

Basic Information

School Profile

Change Password

Preferences

School Name

The Future School17/12/20

School Message

Online Learning Platform24/250

Save Changes

Max Image Size = 1 MB



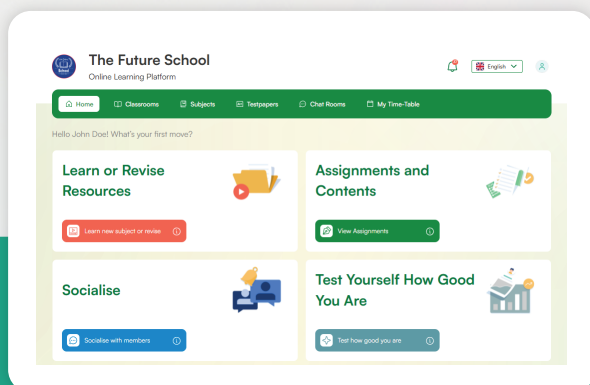
Scan/Click here to learn how:

- To edit your basic information.
- To edit school profile.
- To change your password.

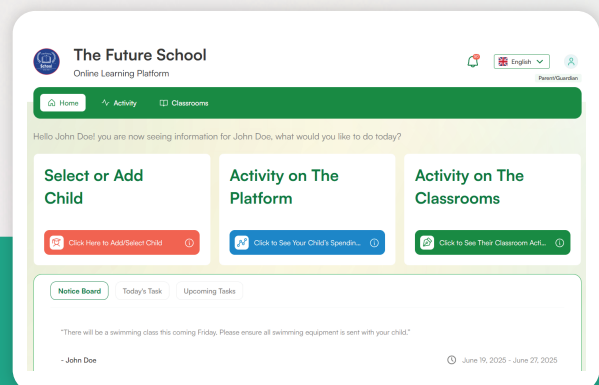
The school name and motto set by you appears in student, teacher and parent dashboards.
Sample of how everyone can view it.



The Future School



Student's Dashboard

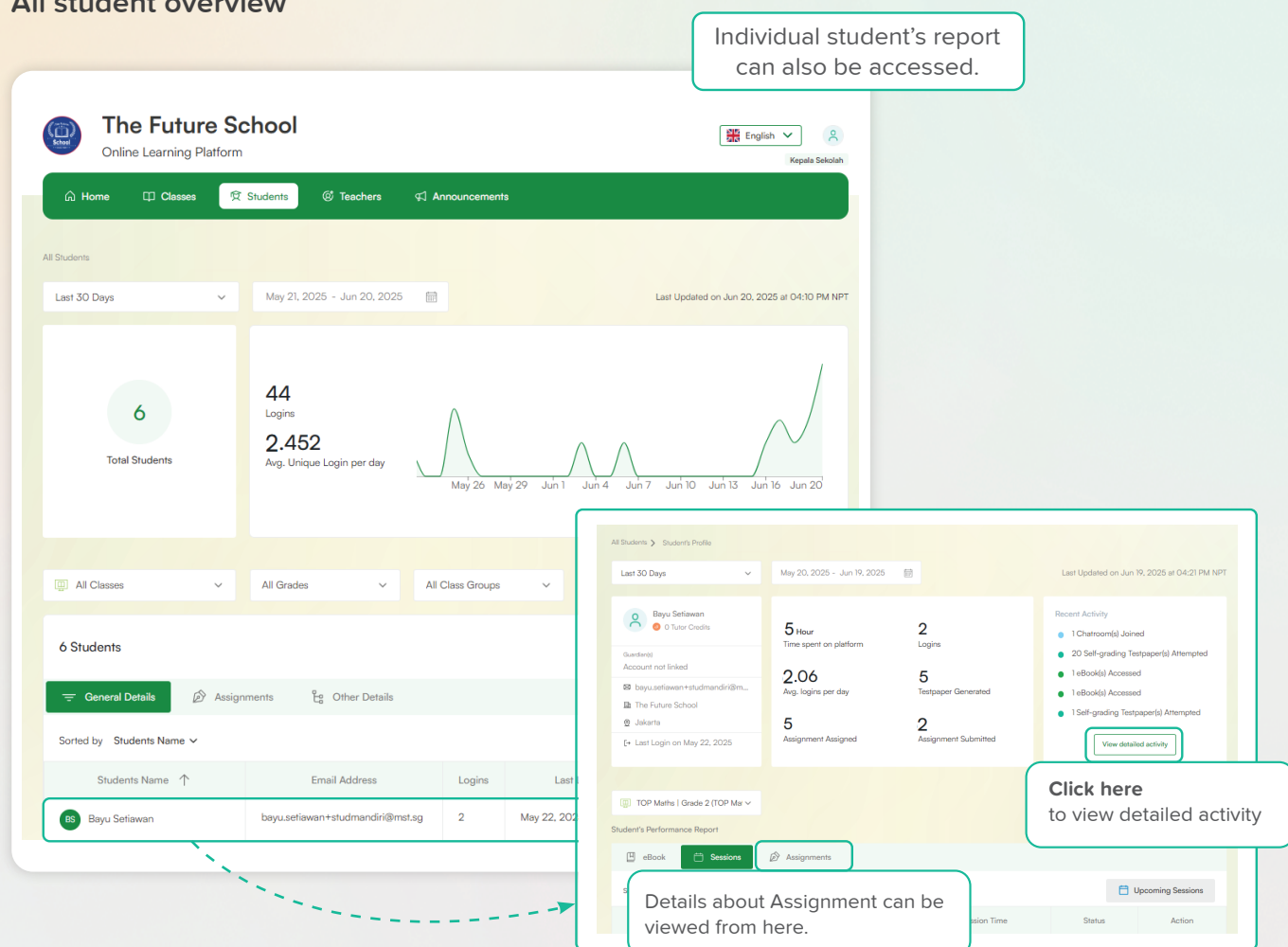


Parent's Dashboard

Data Driven Insight into Your School's Pulse

With Jelajah Ilmu, you can gain specific and general insights into individual students' learning stages and academic behaviors' through detailed reports on their interactions with the platform. Also, you can gain comprehensive insights into online & offline teaching activities of your teachers on the platform. With student, teacher and overall school's performance data available, you can accurately evaluate the competency and make more informed decisions.

All student overview



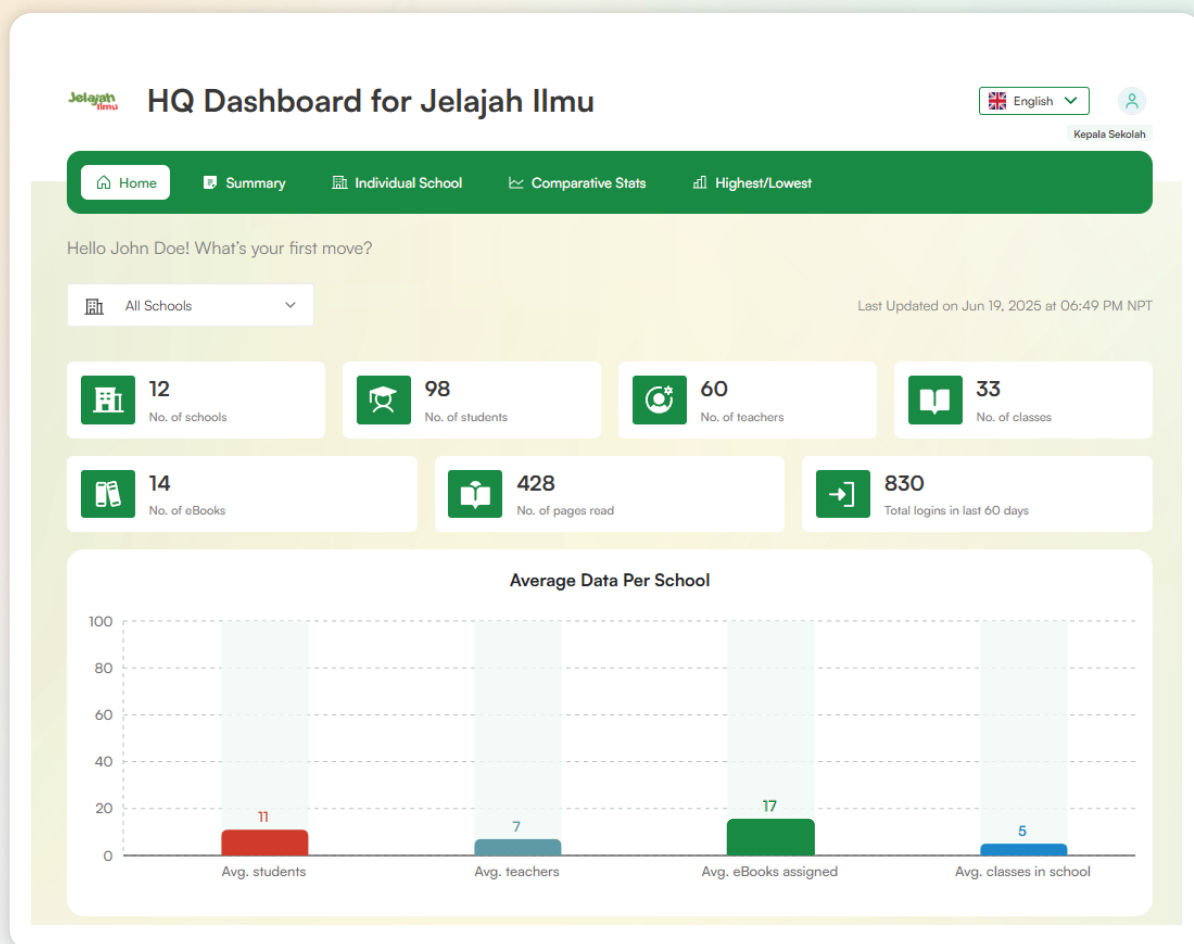
Scan/Click here to learn how:

- To access class-wise data.
- To access overall and individual student's data.
- To access overall and individual teacher's data.

HQ Dashboards

As a leader overseeing multiple educational institutions, it is crucial to have effective tools and systems in place to monitor and manage the performance of each school under your supervision. Jelajah Ilmu provides a comprehensive and centralised system to track and assess the performance of individual schools within your charge.

Here is your HQ Dashboard



HQ Dashboard Continue..

You can view summary data of your schools from here.



Scan/Click here to learn how:

- To access the summary information from HQ Dashboard.

Click here to get summarised information for schools under your charge.

HQ Dashboard for Jelajah Ilmu

English

Kepala Sekolah

Home Summary Individual School Comparative Stats Highest/Lowest

Home > Summary

Summary Information

General Information	Value
Number of schools	12
Number of students	98
Number of teachers	60
Average number of students per school	11
Average number of teachers per school	7
Number of sessions	93
Number of assignments provided	156
Total logins in last 60 days	830

Classes Information

Summary of multiple school's General Information, Class Information and eBook Information can be viewed in detail from here.

You can access individual school reports where you can view student, teacher & school reports and make announcements.



Scan/Click here to learn how:

- To view individual report & make announcement for any school.

Click here to access individual school information.

HQ Dashboard for Jelajah Ilmu

English

Kepala Sekolah

Home Summary Individual School Comparative Stats Highest/Lowest

Viewing information for school:

Class Reports and Comparisons

Reports & compare classes

Student Reports and Insights

Student performance data

Teacher Reports and Profiles

View reports on teachers

Announcements and Notices

Messages or consent forms

Active Notice(s)

Sent to: Parents, Teachers and Students of Entire School

"Tomorrow, we have a science project activity and will be visiting the botanical garden. Please make sure to bring all the necessary items for the day."

- John Doe (Kepala Sekolah)

June 19, 2025 - June 21, 2025

From the filter, you can choose one of your schools to view its individual report.

HQ Dashboard Continue..



You can access a tool that allows you to compare data of two different schools.



Scan/Click here to learn how:

- To compare grades, school, classes, students and teacher performance data between two schools.

Click here to compare between different metrics like schools, grade-subject, classes, students, teachers.

HQ Dashboard for Jelajah Ilmu

English

Home Summary Individual School **Comparative Stats** Highest/Lowest

Click on the metric that you want to compare

Compare Between Grade-Subject

Compare Between Schools

Compare Between Classes

Compare Between Students

Compare Between Teachers

You can access a tool that lets you view the highest/lowest performing school from the list of your schools.



Scan/Click here to learn how:

- To track your highest and lowest performing schools.

Click here to get highest/lowest summary information for schools under your charge.

HQ Dashboard for Jelajah Ilmu

English

Home Summary Individual School Comparative Stats **Highest/Lowest**

Home > Highest/Lowest

Highest/Lowest Information

General Information	Highest School (Score)	Lowest School (Score)
Number of students	Jeli Revamp QA School (25)	Chatroom test ho4 (1)
Number of teachers	Lite to MOE (11)	Chatroom test ho1 (1)
Number of assignments provided	Jeli Revamp QA School (128)	Next Week Indo Release Pro School (0)
Number of sessions	Jeli Revamp QA School (82)	Next Week Indo Release Pro School (0)
Logins	Jeli Revamp QA School (845)	Chatroom test ho (0)


Classes Information

Number of classes	Jeli Revamp QA School (8)	Novwmberrrrr202444 School chatroom (0)
Number of general classes	Jeli Revamp QA School (2)	The Future School (0)

You can access data to track your highest and lowest performing schools in detail.

Make Announcements

As a school leader, you can communicate and send important notices to a specific class, teachers or parents via the Announcement feature. This streamlines communication and ensures that important information, updates or any activity related to the school such as upcoming exams, sports week, field trip, group projects and so on is received and acted upon on time by the relevant stakeholders.



Did you know?

You can easily make Announcements and send Notices, including those requiring acknowledgement and feedback via eConsent forms.

Make Announcement / Get Response

Make General Announcement To Parents, Teachers, Students of entire school

Your Message

B *I* U x^2 x_2

Tomorrow, we have a science project activity and will be visiting the botanical garden. Please make sure to bring all necessary items for the day.

Attachment File/Link

Enter a URL or click on the attachment icon to upload a file

Max file size per attachment is 10 MB

End Announcement Date: Jun 21, 2025

Start Announcement Time: 3:00 PM

Timezone: Asia/Singapore

Back Continue

Make Announcement / Get Response

Users will see your announcement when they login. Your message will be announced with the following details:

User Type
Parents, Teachers, Students

Class(es)
All Classes

Message
Tomorrow, we have a science project activity and will be visiting the botanical garden. Please make sure to bring all the necessary items for the day.

Announcement Ends On
Jun 21, 2025 at 03:00 PM SGT

Back Announce




Scan/Click here to learn how:

- To create and send General Announcements.
- To create eConsent Form.
- To view response from eConsent Form.

Access Our Tutorial Videos to Familiarise Yourself with Our Platform!



 Scan/Click here



My Profile

- Edit basic information
- Edit school profile
- Change password
- Enable/Disable pop-up guides



Data-driven Insights

- Class-wise report
- Overall and individual students' report
- Overall and individual teachers' report



HQ Dashboard

- Edit basic information, HQ profile and change password
- Access summary information
- Access individual school information
- Access comparative information
- Access highest/lowest performing school information



Make Announcements

- Send General Announcement
- Send eConsent form
- View response from eConsent form

Note: Feature updates might be carried out periodically without prior notification, to provide a better user experience. Please contact us via the Chat Support, for assistance regarding the platform.

Need more information?

We also have a presence on social media sites like Facebook and Instagram. Follow the links below to write us an email or visit our website to learn more about our platforms and to receive the latest news.

 www.jelajahilmu.com

 www.instagram.com/jelajahilmu_mst/

 www.facebook.com/people/Jelajah-Ilmu/100083039306891/

 info@jelajahilmu.com



Our Chat Support service is available for when you require any platform related assistance!

Explore the platform on
app.jelajahilmu.com

Download the Jelajah Ilmu app today.



DOWNLOAD ON THE
App Store



GET IT ON
Google Play