



**Jelajah  
Ilmu**

# A Smart Way to Deliver Academics For Smarter Schools

Explore our academic delivery platform equipped with customised functionalities designed to enhance offline & online teaching, learning, monitoring, and comprehensive school administration.



[www.jelajahilmu.com](http://www.jelajahilmu.com)

# Jelajah Ilmu

## The Future of Education!

Jelajah Ilmu is an online academic delivery platform and the recipient of multiple **internationally recognised awards for its technology and pedagogy.**



Our platform enables smooth integration of online and offline academic delivery with the features specifically designed to elevate learning, teaching, performance monitoring, and comprehensive school administration.

**Jelajah Ilmu unlocking possibilities for everyone!**

School  
Leaders

Teachers

Students

Parents



# Jelajah Ilmu X Penerbit Intan Pariwara Advocating Merdeka Kurikulum

Merdeka Kurikulum is an educational framework developed by the Indonesian government to transform the country's curriculum and teaching methods. To implement Merdeka Kurikulum, the government encourages educational institutions to adopt innovative teaching methods, utilise technology, and provide a conducive learning environment.

Jelajah Ilmu, with its innovative features and collaboration with Penerbit Intan Pariwara, offers a comprehensive solution for implementing and delivering Merdeka Kurikulum across educational institutions in Indonesia.



# Our Features

The features of our versatile platform has the ability to support both online and offline academic delivery. For you, the school leader, our platform allows you to see what is happening in your school in terms of usage, results, and even attendance!

## Everything that you can do in Jelajah Ilmu as a School Leader!

### School's Personalised academic delivery platform

- ✓ School Branding- Prominently brand the interface
- ✓ Set logo and motto that appears in all accounts connected to the school

### Data Driven Insights

#### Access class as well as individual student reports

- ✓ Attendance report
- ✓ Testpapers generated & attempted
- ✓ Assignment reports & grades
- ✓ eBooks reports
- ✓ Weekly, monthly & daily logins report

#### Access teacher's activity report

- ✓ Recent activities report
- ✓ In-Class and Online Sessions report
- ✓ Weekly/Monthly scheduled Session report
- ✓ Testpaper generated report
- ✓ Assignment created report
- ✓ eBook accessed
- ✓ Chat Room created & joined report
- ✓ Announcements report

### HQ Dashboard

- ✓ Teacher & student information of multiple schools under your charge
- ✓ Summary information of all schools
- ✓ Individual school information
- ✓ Comparative Information
- ✓ Highest/Lowest performing school data

### Announcements

- ✓ Send General Announcements
- ✓ Send eConsent forms and receive responses

Note: Feature updates might be carried out periodically without prior notification, to provide a better user experience. Please contact us via the Chat Support, for assistance regarding the platform.

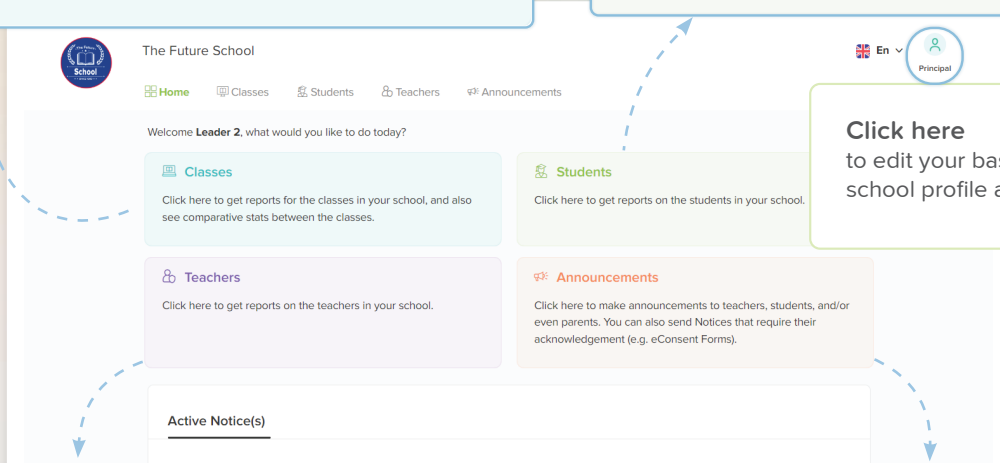


Jelajah Ilmu

## For School Leaders

With the myriad of data provided by **Jelajah Ilmu**, your school has the opportunity to become a top-tier smart school in Indonesia. By utilising the valuable insights offered, you can make well-informed decisions that will lead your educational institution towards success.

### A Leader's Dashboard



**Classes**

Click here to get reports for the classes in your school, and also see comparative stats between the classes.

**Students**

Click here to get reports on the students in your school.

**Teachers**

Click here to get reports on the teachers in your school.

**Announcements**

Click here to make announcements to teachers, students, and/or even parents. You can also send Notices that require their acknowledgement (e.g. eConsent Forms).

**Click here to edit your basic information, school profile and password.**

**Active Notice(s)**

### Explore Jelajah Ilmu to achieve:

- ✓ Informed decision making
- ✓ Improved performance & efficiency tracking
- ✓ Platform personalisation
- ✓ Convenient communication
- ✓ Risk mitigation
- ✓ Overall understanding of the school's progress

# Your School's Personalised Academic Delivery Platform

Jelajah Ilmu allows you to prominently brand the interface with your school's logo and motto which can be edited as well. The same logo and motto will appear in the dashboard of every individual whose account is connected with your school's.

**My Profile**

Basic Information

**School Profile**

Change Password


Preferences

School Name

The Future School 17/128

School Message

Online Learning Platform 24/250



Max Image Size = 1 MB

Save Changes



Scan/Click here to learn how:

- To edit your basic information.
- To edit school profile.
- To change your password.

The school name and motto set by you appears in student, teacher and parent dashboards.  
Sample of how everyone can view it.



The Future School

**The Future School**

Welcome Kimi, what would you like to do today?

**Learn/Revise**

Click here if you want to learn something new, or revise something that you have already learned.

**Test yourself**

Click here to assess how good you are, and identify areas of weakness so that you can directly work on those areas.

**Socialise**

Click here to socialise with members of your community, including entering live videos and text-chat sessions.

**Assignments and Contents**

Click here to get, submit, and/or review assignments or other contents that your teacher may have assigned to you.

**Notice Board** Today's Task Upcoming Tasks

"Hello, Due to the recent pandemic of COVID-19, all physics class will be stopped and we will opt to go online. We will conduct class via our own mySecondTeacher platform until further notice. Thank you! and Stay Safe!"  
- mySecondTeacher (Admin) Aug 04, 2020 - Sep 15, 2020

"Hello Students. Please join group chat session on June 1, 2020 at 10:00 AM!"  
- Mr. Kikulin (Teacher) Aug 04, 2020 - Sep 15, 2020

Presented by **Jelajah Ilmu Mohir**

Student's Dashboard

**The Future School**

Welcome Martha, you are now seeing information for Kim Jensen. What would you like to do today?

**Select/Add Child**

Click here to select or add another child into your account.

**Activity on the Platform**

Click here to see general reports on how your child is spending his/her time on the platform.

**Activity in the Classrooms**

Click here to see classroom-specific reports for your child.

**Notice Board** Today's Task Upcoming Task

Currently, there isn't any notice from the school.  
Notices or content forms sent by the schools are seen here.

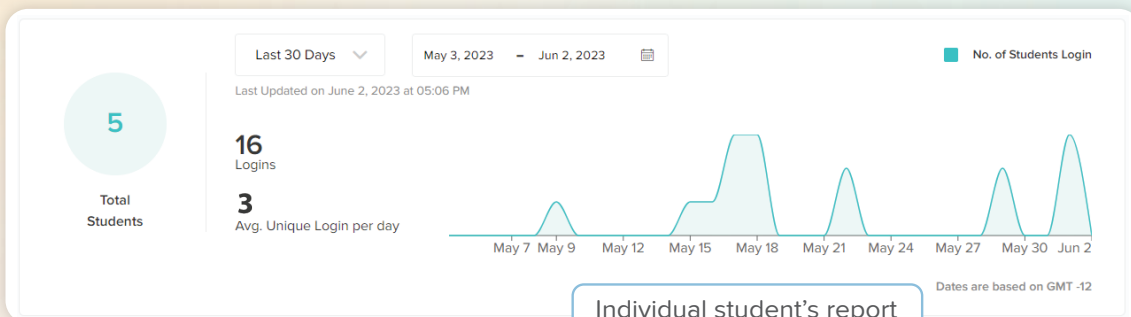
Presented by **Jelajah Ilmu Mohir**

Parent's Dashboard

# Data Driven Insight into Your School's Pulse

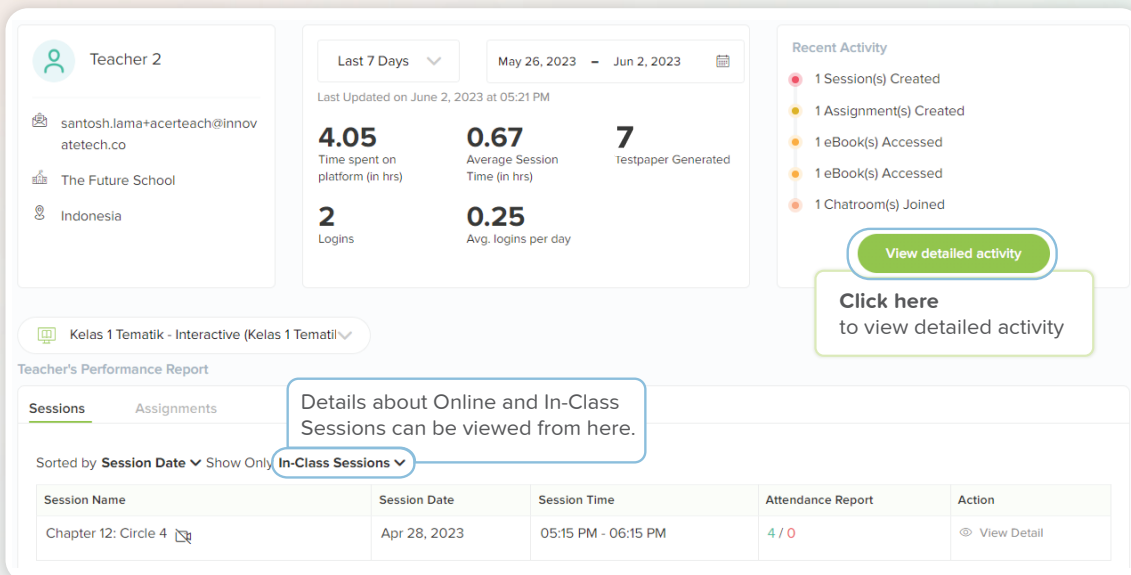
With Jelajah Ilmu, you can gain specific and general insights into individual students' learning stages and academic behaviors' through detailed reports on their interactions with the platform. Also, you can gain comprehensive insights into online & offline teaching activities of your teachers on the platform. With student, teacher and overall school's performance data available, you can accurately evaluate the competency and make more informed decisions.

## All student overview



Individual student's report can also be accessed.

## Individual teacher overview



Details about Online and In-Class Sessions can be viewed from here.



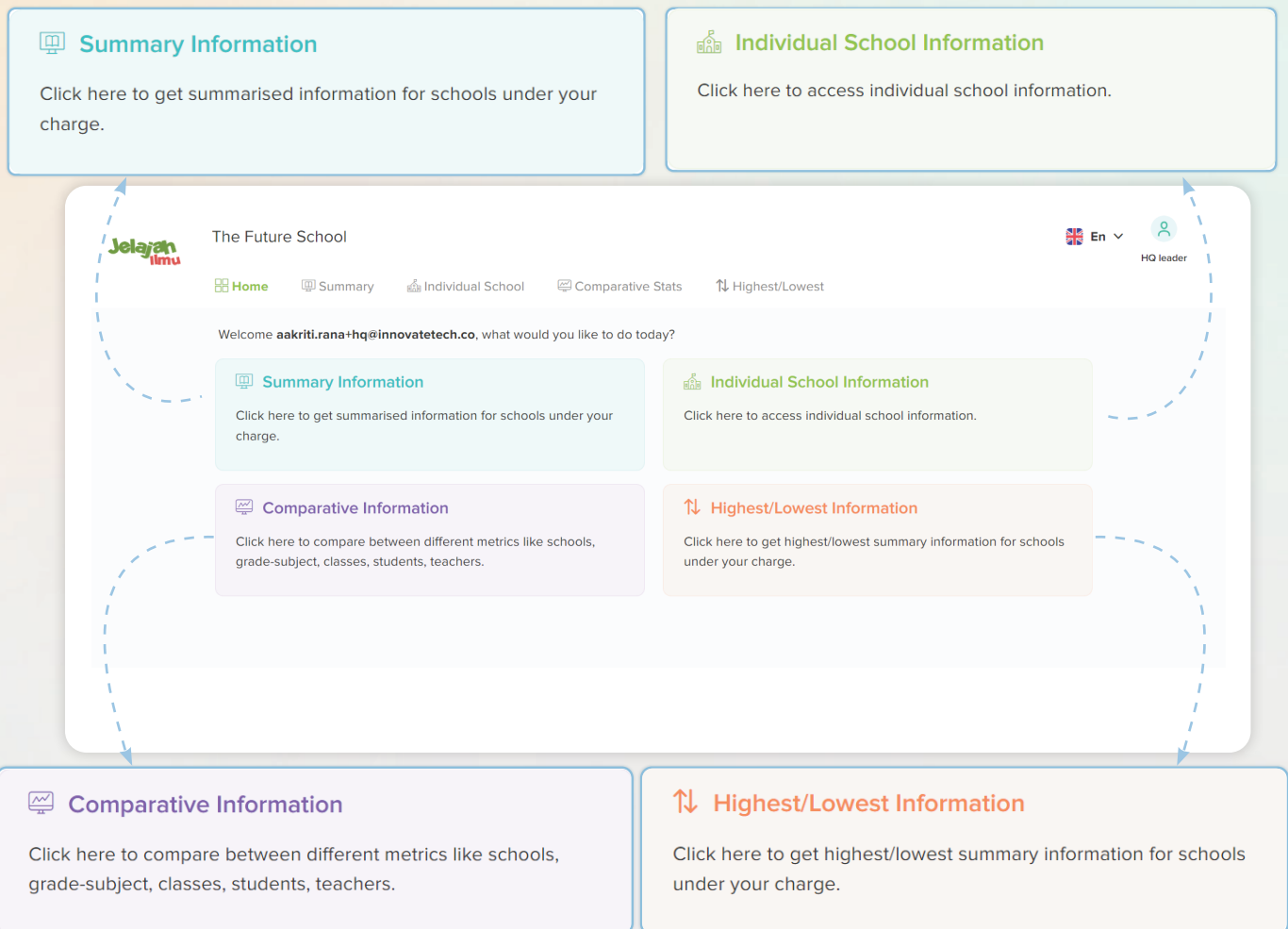
Scan/Click here to learn how:

- To access class-wise data.
- To access overall and individual student's data.
- To access overall and individual teacher's data.

# HQ Dashboards

As a leader overseeing multiple educational institutions, it is crucial to have effective tools and systems in place to monitor and manage the performance of each school under your supervision. Jelajah Ilmu provides a comprehensive and centralised system to track and assess the performance of individual schools within your charge.

## Here is your HQ Dashboard





# HQ Dashboard Continue..



You can view summary data of your schools from here.

## Summary Information

Click here to get summarised information for schools under your charge.

| General Information                               | Value |
|---|-------|
| Number of schools                                 | 3     |
| Number of students                                | 30    |
| Number of teachers                                | 18    |
| Average number of students per school             | 10    |
| Average number of teachers per school             | 6     |
| Number of online sessions                         | -     |
| Number of assignments provided                    | 29    |
| Total logins in last 60 days                      | 77    |
| Classes Information                               |       |
| Number of classes                                 | 18    |
| Number of general classes                         | -     |
| Number of eBook classes (access to digital books) | 17    |
| eBooks Information                                |       |
| Number of eBooks assigned to schools              | 17    |
| Number of eBook pages read by students            | 84    |
| Average number of eBooks assigned per school      | 5.67  |



Summary of multiple school's General Information, Class Information and eBook Information can be viewed in detail from here.



Scan/Click here to learn how:

- To access the summary information from HQ Dashboard.

You can access individual school reports where you can view student, teacher & school reports and make announcements.

## Individual School Information

Click here to access individual school information.

Viewing information for school:

- Test MOE School
- QCD BBT Lite School - Do Not Bulk / Enter
- BBT School promotion 12

### Classes

Click here to get reports for the classes in the school, and also see comparative stats between the classes.

### Teachers

Click here to get reports on the teachers in the school.

### Students

Click here to get reports on the students in the school.

### Announcements

Click here to review announcements made by teachers.

### Active Notice(s)

Currently, there isn't any notice from the school. Notices or consent forms sent by the schools are seen here.

From the filter, you can choose one of your schools to view its individual report.



Scan/Click here to learn how:

- To view individual report & make announcement for any school.

# HQ Dashboard Continue..



You can access a tool that allows you to compare data of two different schools.

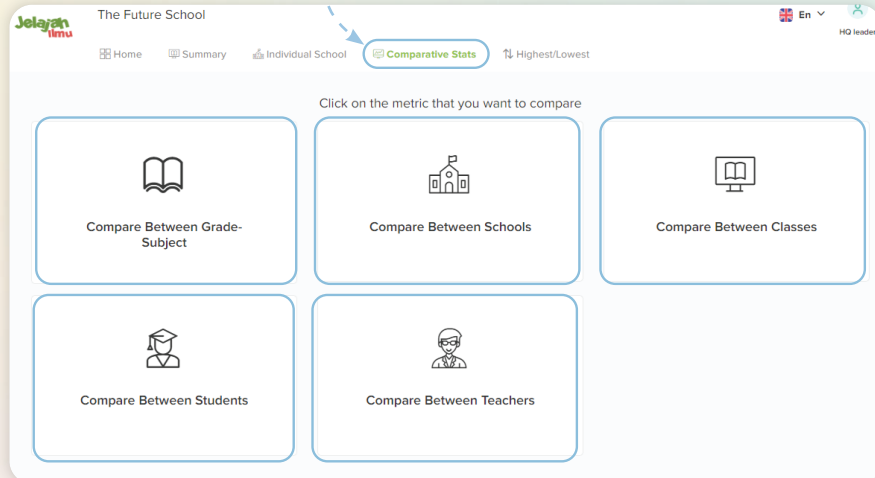


Scan/Click here to learn how:

- To compare grades, school, classes, students and teacher performance data between two schools.

### Comparative Information

Click here to compare between different metrics like schools, grade-subject, classes, students, teachers.



You can access a tool that lets you view the highest/lowest performing school from the list of your schools.

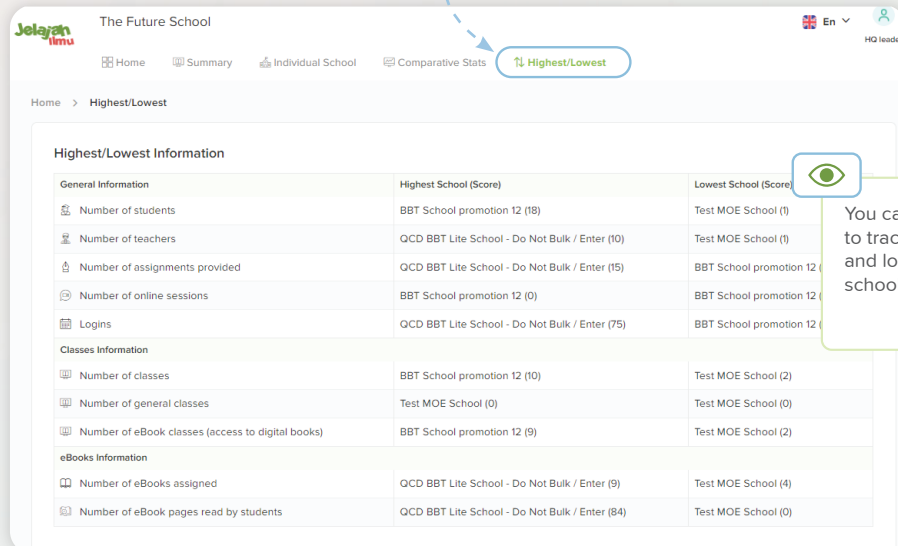


Scan/Click here to learn how:

- To track your highest and lowest performing schools.

### Highest/Lowest Information

Click here to get highest/lowest summary information for schools under your charge.



You can access data to track your highest and lowest performing schools in detail.

# Make Announcements

As a school leader, you can communicate and send important notices to a specific class, teachers or parents via the Announcement feature. This streamlines communication and ensures that important information, updates or any activity related to the school such as upcoming exams, sports week, field trip, group projects and so on is received and acted upon on time by the relevant stakeholders.

**Make Announcement / Get Response**

Get consent from Parents, Teachers, Students of specific class(es) [Edit](#)

Select class(es) you want to announce message to

Kelas 1 Bahasa Indonesia (Kumer) x

Your Message

**B I U**

Hello Parents and Students,

Tomorrow, we have a Science project where we will visit the Botanical garden to gain knowledge about various plants and living organisms. Kindly ensure you bring the necessary materials for this activity. We kindly request you to RSVP.

265 / 1000

Announcement File or Link

Enter an url or click on the attachment icon to upload a file

Poll Options

a)  b)

End Announcement Date: Jun 1, 2023

End Announcement Time: 3:45 PM

Timezone: Asia/Kathmandu

Make Announcement Available at a later date

[Back](#) [Continue](#)



## Did you know?

You can easily make Announcements and send Notices, including those requiring acknowledgement and feedback via eConsent forms.

**Make Announcement / Get Response**

Users will see your announcement when they login. Your message will be announced with the following details:

| User Type                   | Class(es)                        |
|-----------------------------|----------------------------------|
| Parents, Teachers, Students | Kelas 1 Bahasa Indonesia (Kumer) |

Message

Hello Parents and Students,  
Tomorrow, we have a Science project where we will visit the Botanical garden to gain knowledge about various plants and living organisms. Kindly ensure you bring the necessary materials for this activity. We kindly request you to RSVP.

Poll Options

Attending  Not attending

Announcement Ends On

June 1, 2023 at 03:45 PM NPT

[Back](#) [Announce](#)



### Scan/Click here to learn how:

- To create and send General Announcements.
- To create eConsent Form
- To view response from eConsent Form

# Access Our Tutorial Videos to Familiarise Yourself with Our Platform!



▶ Scan/Click here



## My Profile

- Edit basic information
- Edit school profile
- Change password
- Enable/Disable pop-up guides



## Data-driven Insights

- Class-wise report
- Overall and individual students' report
- Overall and individual teachers' report



## HQ Dashboard

- Edit basic information, HQ profile and change password
- Access summary information
- Access individual school information
- Access comparative information
- Access highest/lowest performing school information



## Make Announcements

- Send General Announcement
- Send eConsent form
- View response from eConsent form

Note: Feature updates might be carried out periodically without prior notification, to provide a better user experience. Please contact us via the Chat Support, for assistance regarding the platform.

## Need more information?

We also have a presence on social media sites like Facebook and Instagram. Follow the links below to write us an email or visit our website to learn more about our platforms and to receive the latest news.

 [www.jelajahilmu.com](http://www.jelajahilmu.com)

 [www.instagram.com/jelajahilmu\\_mst/](https://www.instagram.com/jelajahilmu_mst/)

 [info@jelajahilmu.com](mailto:info@jelajahilmu.com)

 [www.facebook.com/people/Jelajah-Ilmu/100083039306891/](https://www.facebook.com/people/Jelajah-Ilmu/100083039306891/)



Our Chat Support service is available for when you require any platform related assistance!

Explore the platform on [app.jelajahilmu.com](http://app.jelajahilmu.com)

Download the Jelajah Ilmu app today.

